



## Laboratory Guidebook Notice of Change

Chapter new, **revised**, or archived: MLG 8 Appendix 1.04

Titles: Flow Chart Specific for FSIS Laboratory Isolation and Identification of *Listeria monocytogenes*.

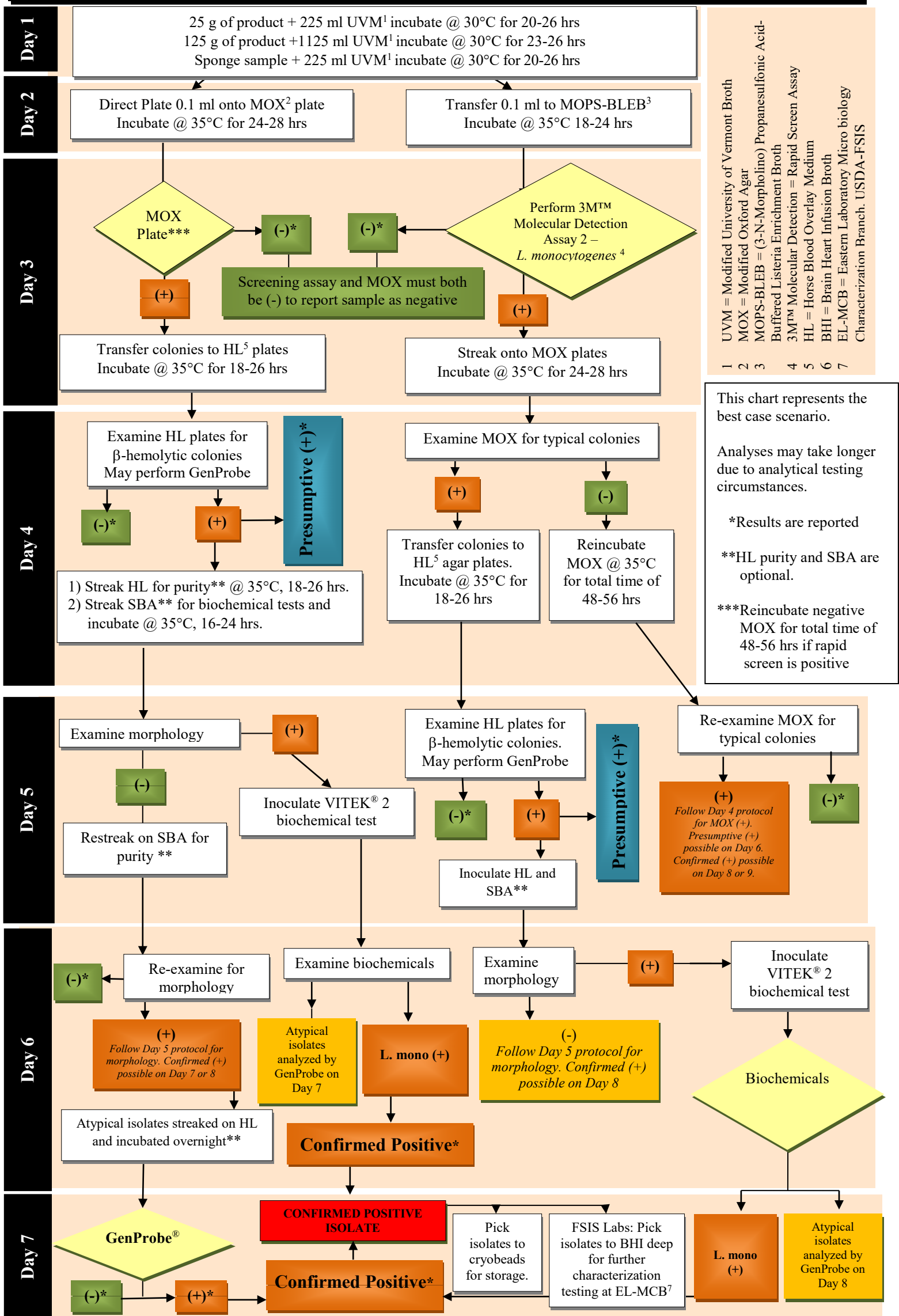
Isolation and Identification of *Listeria monocytogenes* (Culture Method only)

Effective Date: 1/02/19

Description and purpose of change(s):

This flow chart describes FSIS Laboratory testing included in MLG 8 Isolation and Identification of *Listeria monocytogenes* from Red Meat, Poultry, Ready-To-Eat Siluriformes (Fish) and Egg Products, and Environmental Samples.

# Flow Chart Specific for FSIS Laboratory Isolation and Identification of *Listeria monocytogenes*.



UVM = Modified University of Vermont Broth  
 MOX = Modified Oxford Agar  
 MOPS-BLEB = (3-N-Morpholino) Propanesulfonic Acid-Buffered Listeria Enrichment Broth  
 3M<sup>TM</sup> Molecular Detection = Rapid Screen Assay  
 HL = Horse Blood Overlay Medium  
 BHI = Brain Heart Infusion Broth  
 EL-MCB = Eastern Laboratory Microbiology Characterization Branch, USDA-FSIS

1 2 3 4 5 6 7

This chart represents the best case scenario. Analyses may take longer due to analytical testing circumstances.

\*Results are reported

\*\*HL purity and SBA are optional.

\*\*\*Reincubate negative MOX for total time of 48-56 hrs if rapid screen is positive

# Isolation and Identification of *Listeria monocytogenes* (Culture Method only)

